



RAYVOLT

premium e-bikes

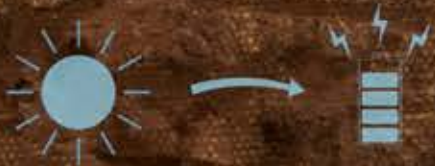


THE RAYVOLUTION

The Rayvolt philosophy is to promote alternative transportation by offering our customers a clean, high-tech, and stylish way to commute.

The name comes from the Sun's rays and the electrical unit Volt. Put together, sounds like its homonym "revolt".

The Sun's rays, the voltage and the revolutionary spirit are the fundamentals behind our brand.





YESTERDAY'S
CHARM

Tomorrow's
TECHNOLOGY

Today's
Solution

Cruzer

TIMELESS DESIGN

The original Rayvolt model, The Cruzer, was influenced by the first era of motorcycle from early 1900, the counter rock culture of 1960's Cafe Racer with a twist of California Beach Cruzer. This unique design combined with smart technology (EIVA) and state of the art BLDC motor stands out from the crowd. A timeless piece of transportation.





Pewee

COLOR AND TRIM

Get your custom color



Clockwork
ORANGE



British Racing
Green



GUN METAL
GREY





TORINO

STRONG CHARACTER

The Torino is a variation of our flagship model, the Cruzer. While still keeping the curved and powerful look of the frame, it has a sportier design; The look of a Cruzer with a more ergonomic geometry. Its sleek wide tires, compact profile and low center of gravity make this bike an ultra high-performing, City Carving Speedster. It's strong and aggressive profile, with hump-backed tubing, is reminiscent of the shape of a young bull, or "taurus" in Latin; that's why it's called the Torino.



TORINO

COLOR AND TRIM



Get your custom color

pearl WHITE



GRAPHENE
grey



electric
green



Ambassador

Neoclassic Spirit

Classic, yet far from conventional. Ambassador is the most aristocratic aesthetics bike that Rayvolt has designed to date. Delicately strong, this model combines a retro and neoclassical look with a focus on the details. This puts the bike in a class of its own that offers the perfect product for users who like traditional bicycles.





Ambassador

COLOR AND TRIM

ROYAL BLUE



British Green



Burgundy Wine





Clubman

Live the city

A compact and urban bike that combines sport and refined style. For those who love the streets and the night. A comfortable vehicle for life in the city.



Clubman

COLOR AND TRIM

Black Shadow



Blue Night



Beachin'

Wild and adventurous

The Beachin' is Rayvolt's adventure bike. A large and muscle bicycle for the beach lovers. Its size and big wheels are perfect for riding through sand or on dirt roads. Despite its dimensions, it remains a stable and manageable bike.





Beachin'

COLOR AND TRIM

Vintage Green



Laguna Blue





The Trixie

Enjoy your daily life

This is the idea that sparked the Rayvolution; how do you combine a bike (the ultimate vehicle in an urban environment) with carrying young children around the city, and transporting other items, like shopping? This stylish vintage-looking, Cargo Tricycle allows you to safely carry 3 children, or an adult and a child, as well as all your groceries. Its low center of gravity allows the bike to safely turn at speed -unlike its competitors. With comfortable vintage leather, child seat belts and isofit fittings to “lock in” baby carriers, this bike has everything needed for transporting your family in comfort. This bike combines a great vintage look with the latest smart technology.



The Trixie



COLOR AND TRIM

Latte



Rose



Tila Green



Tomorrow's TECHNOLOGY

EIVA

The EIVA is Rayvolt's custom designed software which is used to control, customize, and monitor your bike.

The EIVA computer can be mounted to the handle bars and is ready to go when you are. The app can be downloaded for use on an existing smartphone.

1. 360 Display

Monitor speed, battery state, MPH/KM Run & essential bike specs

2. Bluetooth

Monitor the connection between the bike and Eiva®

3. iPas Monitoring

Adjust your pedal assistance

4. Settings

Advanced configurations

Technical Support Chat: Talk to a live agent for support on the go

5. Music

Play your music, your way

6. Maps

GPS access

7. Information

Display Help



EIVA App
Available for iOS & Android



GPS



WiFi



BEACON



IoT



RAYTRACK

Using Raytrack, you can check your bike's location in real time from your mobile device, anywhere in the world.

Raytrack uses GPS, GSM and surrounding Wifi IPs to track the bike's location.

When the bike is within 20 meter range, Raytrack uses bluetooth for short-range communication, that will display distance as a percentage as you approach the bike's pinpointed location.

Technical Support Cloud based

Having issues configuring my iPAS.

Please allow me to connect to your device and tune it.

Sure, fantastic.

Done, your iPAS was disabled in settings. I turned it on for you.

Works great now! Thanks.

Live Support directly from your EIVA device

Need assistance?
Chat Live with our dedicated Rayvolt Technical Support Team directly from your connected EIVA device.

Remote access allows the Technical Support Team to connect to your Rayvolt for help with settings or troubleshooting.

The MOTOR

Rayvolt hubs are a complex brushless 3 phase dc motor comprising of 48 different copper coils and magnets that are placed on the outermost perimeter of the motor for the best possible torque.

The built-in controller receives heat and position data from the coils and within one millisecond computes where to put the next load.

Such accuracy produces a Pure Sine Wave (PSW) current, offering unmatched ride comfort:

More Acceleration

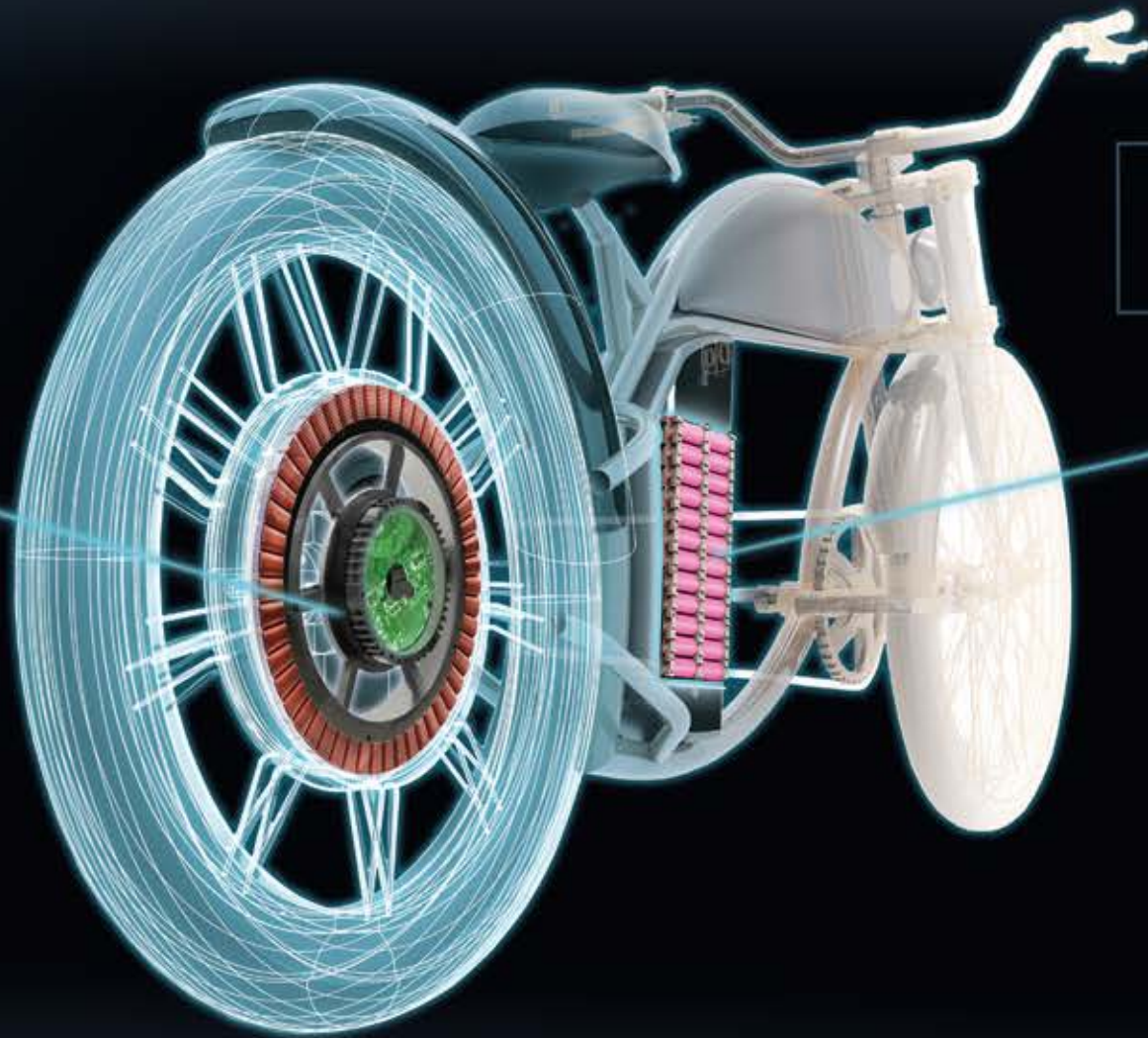
More Torque

More Response

Less Noise

Less Vibration

Less Consumption



The BATTERY



At the core of any electric vehicle, its performance and life expectancy are directly linked to the type of cell used.

The capacity of the battery pack also depends on the amount of cells used. Rayvolt uses 13 cells in a series to reach a nominal voltage of 48V. At peak voltage, a full charge of 54.6V gives incredible power.

We use a minimum of 4 cells in parallel (52 cells in total) or 8 cells in parallel (104 Cells in total). This gives an unmatched capacity of 550Wh and 1100Wh - most of the industry uses 300 to 360Wh.

Battery quality is linked to how the cells are packed and used. Using a state-of-the-art battery management system in our packs, each cell is connected to it before delivering the charge. This high-tech design balances the charge between each cell and can cut the connection in case of a short circuit. This ensures best possible performance while making the battery safer.

SMART FEATURES



AI adapts to cycling environment with Gyrosensor



Intelligent Pedal Assist
with multiple choices

Power assistance with gyroscope hill detection

Motor aid self adjusts

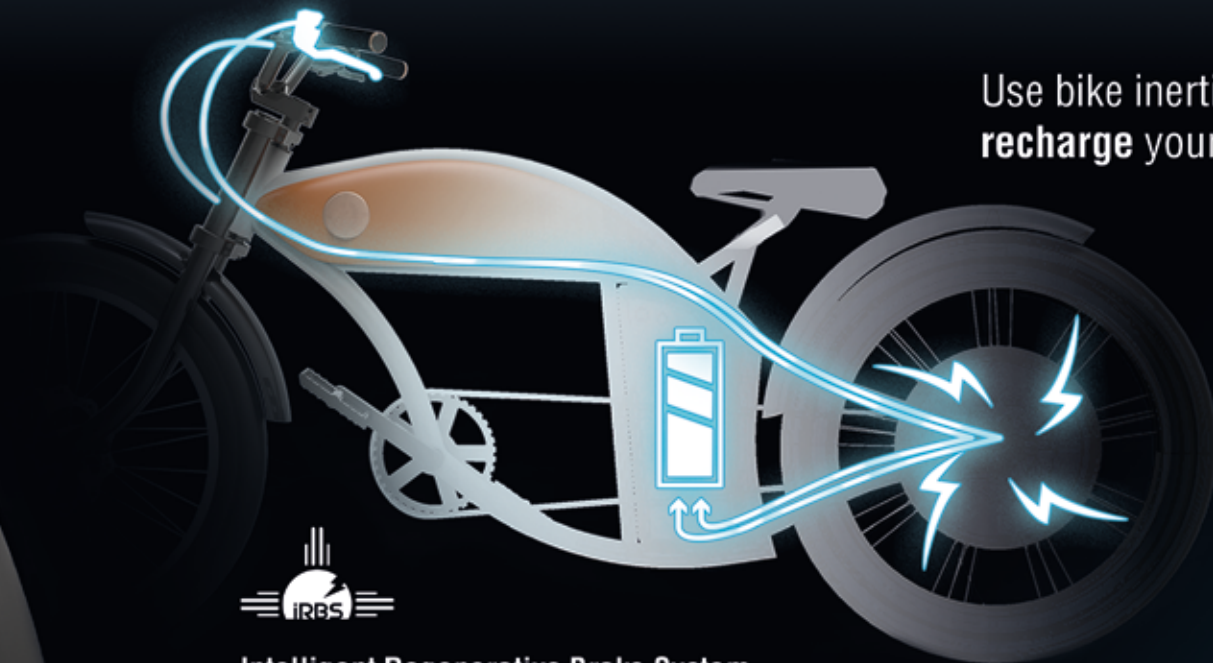


Dual Sensor Crank Set

The Electronic Crank is fitted with a Load Cell measuring the torque applied to the pedal as well as the crank rotary speed.

The controller computes those two values, and with our algorithm, provides a perfectly smooth pedal stroke based on the pressure you apply.

A Real Bionic Sensation !



Intelligent Regenerative Brake System

We created an electronic braking system, fitted into the brake levers, that sends a data signal to the motor controller that provokes a reverse effect in the motor. This converts torque into resistance using the wheel inertia to generate electricity and recharge the batteries.

In simple words, the regenerative braking acts like an ultra powerful dynamo when the levers are pulled.

Use bike inertia to **recharge** your battery



The intelligent iRBS is linked to EIVA's built-in gyroscope allowing the bike to detect the cycling environment. It then provides the necessary amount of regenerative brake according to the angle of the hill.

iRBS paired with the cloud-based ITS allows you to remotely lock your rear wheel.

Today's
Solution

THROTTLE

EIVA

LEATHER TANK

BATTERY COVER

LIGHT KIT

With a simple touch of the EIVA^{App}
you can switch
from 25 km/h pedal assisted vehicle
to a full powered 45 km/h Moped*

PEDAL

Assisted Bike

MOPED

*This option may need a
licence plate in your country

RENAISSANCE 2.0

Accessories and Lifestyle



Extra Saddle

Are you riding with someone else?



Surfboard Carrier

Do you surf?



Picture by Andreas Sawitzki-Pedaliero



Picture by Andreas Sawitzki-Pedaliero



Picture by Andreas Sawitzki-Pedaliero





Portable Battery



The Trixie

Use your battery cover as a regular bag.
Wear it! Handle and comfortable for everyone.



Beachin'

The battery cover includes a security system
to prevent theft.



Clubman

Take your battery easily and charge it wherever you want!

Ambassador

A beautiful design to the last detail that transmits perfectly the brand identity.

RANGE EPAC

25km/h
Standard 60km
Dual 120km

RANGE MOPED

45km/h
Standard 40km
Dual 80km

Range and Charge



SOLAR ENERGY



ELECTRICITY

As protecting the environment is our primary goal, we offer **Solar Charging Bike Covers** at factory cost in order to encourage customers to go carbon neutral. Commuting with a Rayvolt electric bicycle is 100% environmentally friendly as it produces zero emissions. Our state of the art technology powers the bikes with maximum efficiency.

Epac

Pedal assistance mode. there are 6 levels of assistance ranging from "no aid" to "maximum assistance" each can be activated from EIVA.

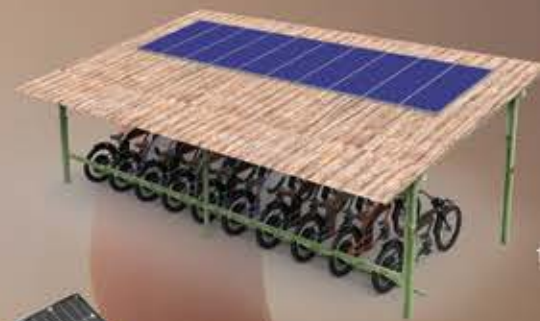
Even if EV are a lot cleaner than their combustion counterpart, keep in mind that grid electricity is never 100% clean. We encourage you to switch to a company that offers renewable sources of power (solar, hydro, wind). If your electricity is generated by coal, please consider our solar options.

Moped hybrid

The Rayvolt Bike is 100% compliant with the EU regulation for E-bikes: EN15194



Solar Dock



Solar Docking station
10 Bikes Bamboo Solar Park
Custom design
100% ECO Solar charging parking
Designed and built for Starboard



Foldable Solar Charger

std Battery : 15% Charge in 1 hour*
dual Battery : 7% Charge in 1 hour*

* Depends on solar condition



Rayvolt Li-ion Fast Charger

Output 54.6V 10A
Std Battery: 1 hour charge
Dual Battery: 2 hour charge



Rayvolt Li-ion Charger Standard

Output 54.6V 4A
Std Battery: 3 hours charge
Dual Battery: 6 hours charge

For indoor use only. Do not open High Voltage inside machine.

Charge Post

Charge up to 4 bikes
with Std battery in 1 hour



Cruzer

TORINO

Ambassador

Beachin'

Clubman

 The Trixie

Motor

Battery

Weight

Frame

Tires

Brakes

Speed control

Smart Hub
25 km/h - 50 Nm
Power Hub
43 km/h - 100 Nm

Std Battery
48 V - 10,5 A
Dual Battery
48 V - 21 A

L size
24 kg
M size
34 kg

Carbon steel

L size
24 x 3.0
M size
26 x 3.0

Rayvolt Oil Disk Brakes
with E-Regenerative
10A-50A

PAS (Pedal Assist System)
Torque Sensor (optional)
Thumb Throttle*
*Depending on your country legislation

Smart Hub
25 km/h - 50 Nm
Power Hub
43 km/h - 100 Nm

Std Battery
48 V - 10,5 A
Dual Battery
48 V - 21 A

35 kg

Steel

26 x 3.0

Rayvolt Oil Disk Brakes
E-Regenerative
10A-50A

PAS (Pedal Assist System)
Torque Sensor (optional)
Thumb Throttle*
*Depending on your country legislation

Smart Hub
25 km/h - 50 Nm

Std Battery
48 V - 10,5 A

20 kg

CrMo

700c x 32

Rayvolt Electro Hydraulic
180 mm
E-Regenerative 10A-50A

PAS (Pedal Assist System)
Torque Sensor (optional)
Thumb Throttle*
*Depending on your country legislation

250W Geared Motor
40 Nm

Std Battery
10,5 A
Extra Battery
16 A

28 kg

Hydroformed 6061
aluminum

26 x 4.0

Tektro Mechanical Disk
Brakes 160 mm

PAS (Pedal Assist System)

Bafang Motor
40 Nm

Std Battery
10,5 A
Extra Battery
16 A

25 kg

Hydroformed
aluminum

26 x 3.0

Rayvolt Disk Brakes

PAS (Pedal Assist System)

Power Hub
43 km/h - 100 Nm

Std Battery
10,5 A
Extra Battery
16 A

60 kg

Steel

24" and 20"

Rayvolt Oil Disk Brakes
with E-Regenerative
10A-50A

PAS (Pedal Assist System)
Torque Sensor (optional)
Thumb Throttle*
*Depending on your country legislation

JOIN
THE
RAY
VOLUTI
ON
!